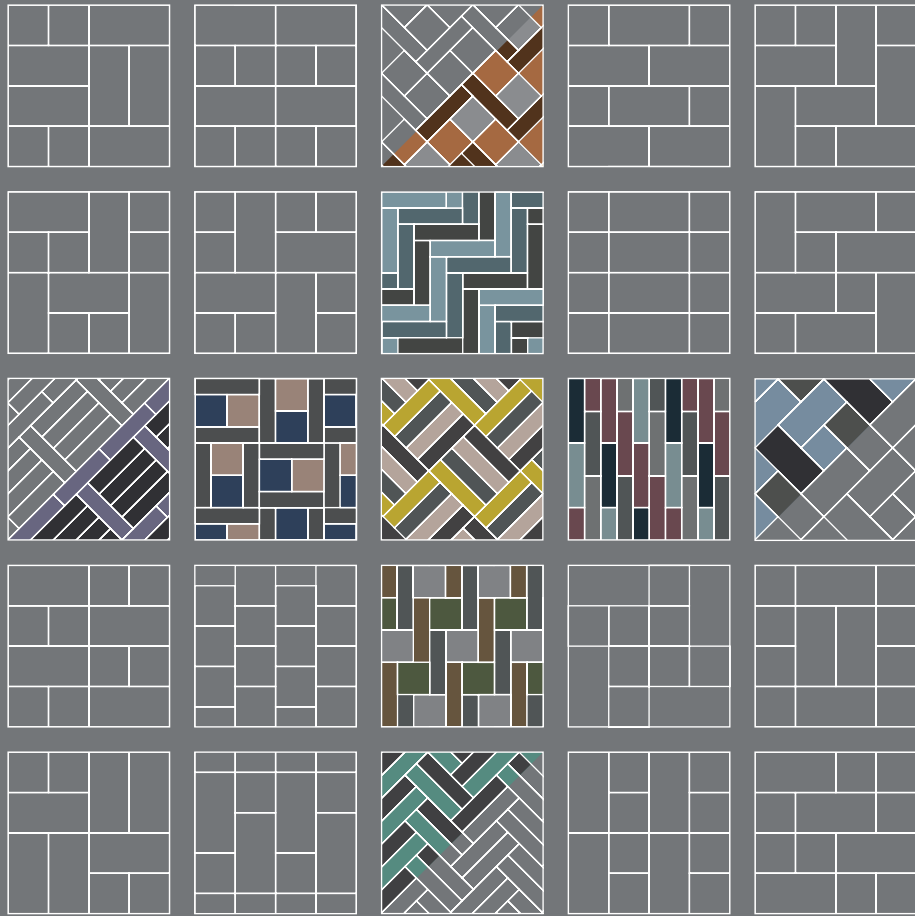


MÉLANGE

Simple & Sophisticated



 **LOOM⁺**

WOVEN DESIGN FLOORING



LOOM⁺ DIFFERENCE

DESIGN AND TECHNOLOGY
ARE WOVEN TOGETHER

Better Floor

The tangible textile feeling of M⁺élange collection closely resembles the original material while exhibiting far superior qualities



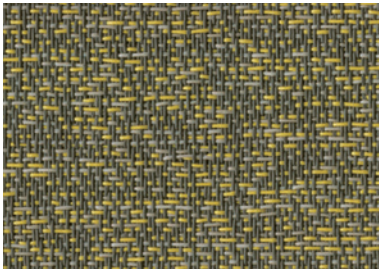
LOOM+
DIFFERENCE

Distinguished NOX EMT™ Core Structure

The first woven flooring with proven NOX EMT™ Core structure that ensures the most stable and durable installation.

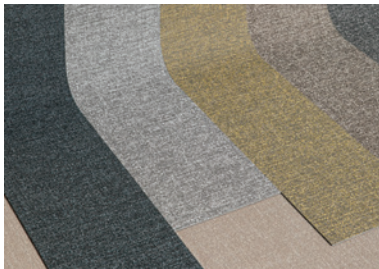
LOOM+ DESIGN

PLAY with COLOR, SIZE and TEXTURE



Profound Color Composition

Realizing multiple tones of color - carefully selected by artists - we provide you with very unique colors that express LOOM+ in harmony with surrounding interiors.



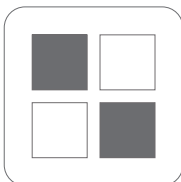
Infinite array of color and texture

Available in myriad colors covering diverse tones like neutral, cool, warm, light and dark tones, we give you unique design patterns.



Designed for mix & match

Creative and unique 'mix & match' only by LOOM+ is realized by introducing the same weaving system to various design patterns.



50x50cm
Tile size



25x100cm
Plank size

Optimal 2 Size variation

With our unique 2 module sizes of 50cmx50cm and 25cmx100cm, the first introduced in woven flooring market, you can elevate flat environments to inspiring interior spaces.

LOOM+ TECHNOLOGY

PROVEN INNOVATION



Distinguished NOX EMT™ Core Structure

NOX EMT™ Core structure featured with innovative functionality and safety, proven in more than 50 countries over 20 years



Safe

Certified non-toxic, phthalate-free, and fiberglass-free fabric



Quick

Quick and easy loose lay® installation without glue



Easy

Minimal cleaning time and low maintenance



Silent & Soft

Soft surface absorbing sound



Non-Slip

Slip-resistance with woven fabric surface



Colorfast

Colorfast properties retain gorgeous original colors over time

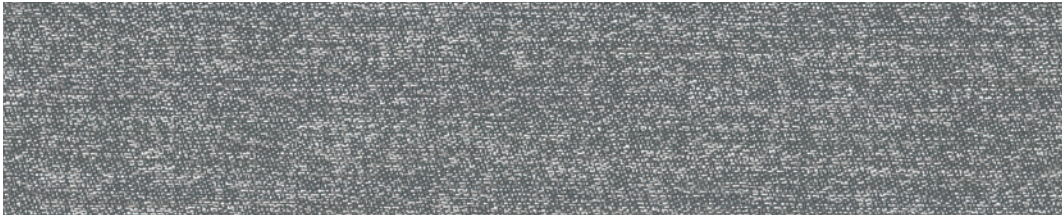
MÉLANGE

Simple & Sophisticated

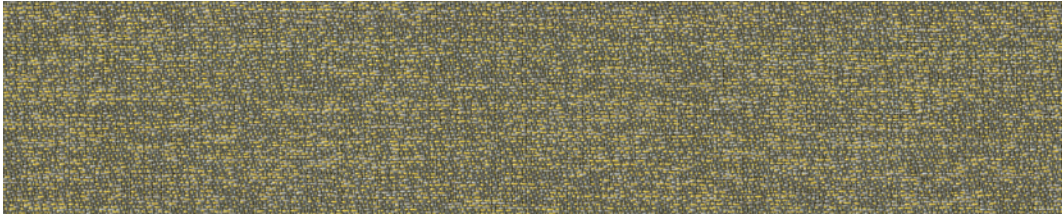
NOX Mélange collection offers a true extent of nature's tree bark or dry soil. This softly rich pattern is a disordered mixture of similar shades, maximizing LOOM⁺ mix & match possibilities in well-matched and diversified color blends.

Enrich your space with LOOM⁺ Mélange, an earthy collection that adds a simple yet ultimate essence of sophistication.





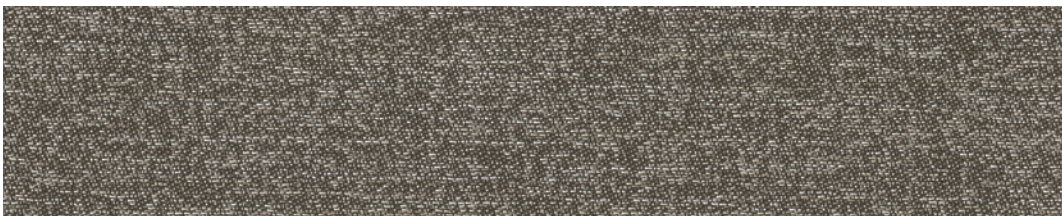
FQ-2601



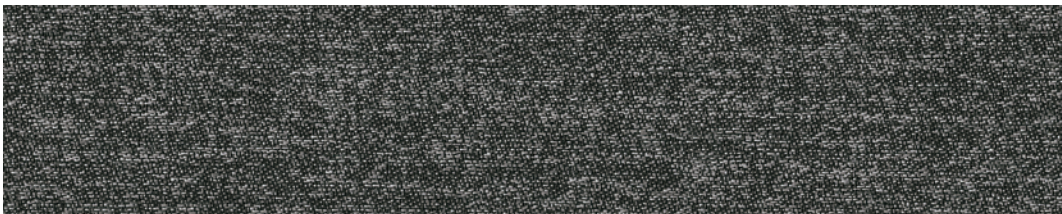
FQ-2602



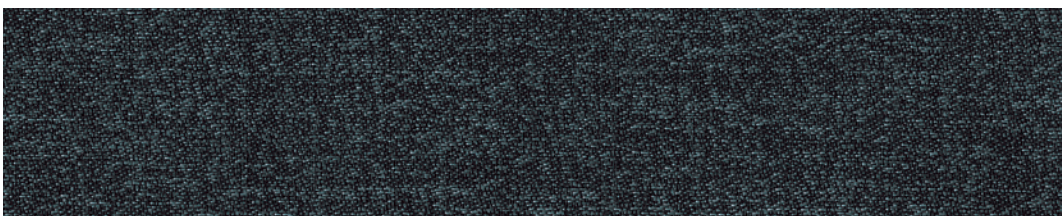
FQ-2603



FQ-2604



FQ-2605



FQ-2606

Reinvent Spaces with

LOOM⁺ PLAY!

All work together in any combination, giving you the freedom to create your own design by mixing & matching different patterns and colors in 2 size variations.

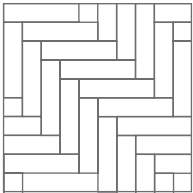


50x50cm

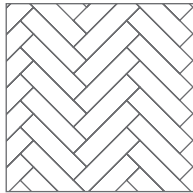


25x100cm

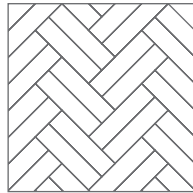
NEW LOOM⁺ PLAY!



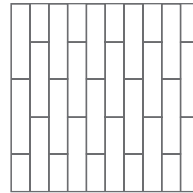
LOOM PLAY #21



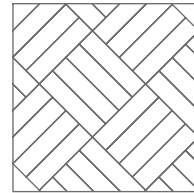
LOOM PLAY #22



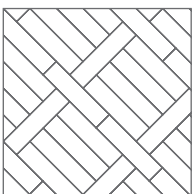
LOOM PLAY #23



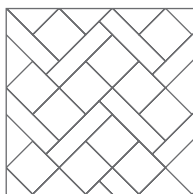
LOOM PLAY #24



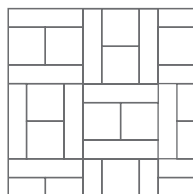
LOOM PLAY #25



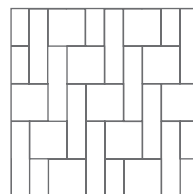
LOOM PLAY #26



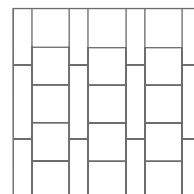
LOOM PLAY #27



LOOM PLAY #28

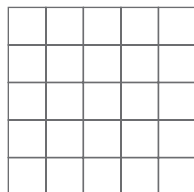


LOOM PLAY #29

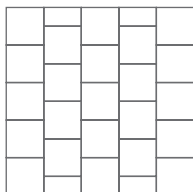


LOOM PLAY #30

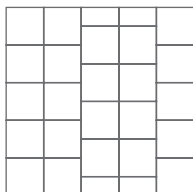
INSTALLATION CONCEPT GUIDE



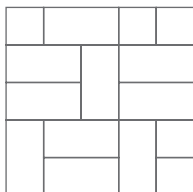
LOOM PLAY #1



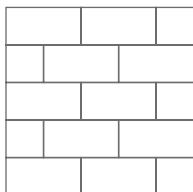
LOOM PLAY #2



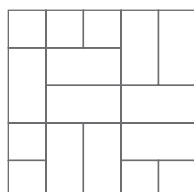
LOOM PLAY #3



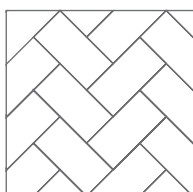
LOOM PLAY #4



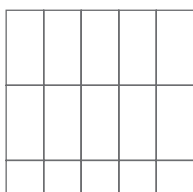
LOOM PLAY #5



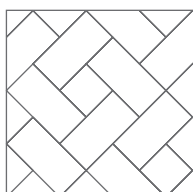
LOOM PLAY #6



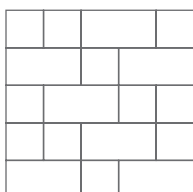
LOOM PLAY #7



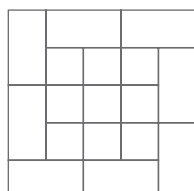
LOOM PLAY #8



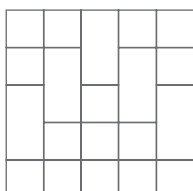
LOOM PLAY #9



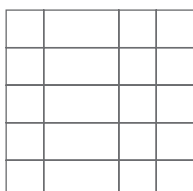
LOOM PLAY #10



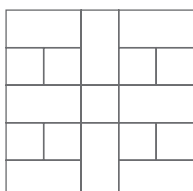
LOOM PLAY #11



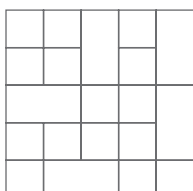
LOOM PLAY #12



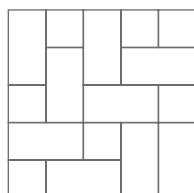
LOOM PLAY #13



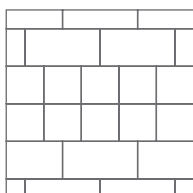
LOOM PLAY #14



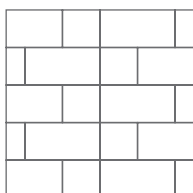
LOOM PLAY #15



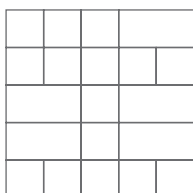
LOOM PLAY #16



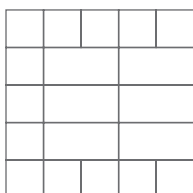
LOOM PLAY #17



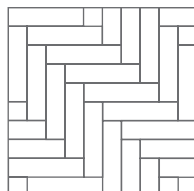
LOOM PLAY #18



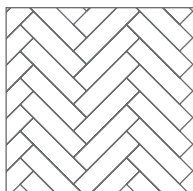
LOOM PLAY #19



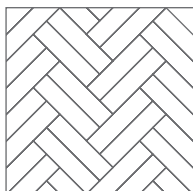
LOOM PLAY #20



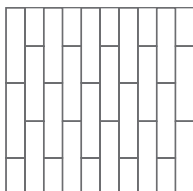
LOOM PLAY #21



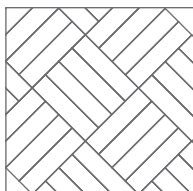
LOOM PLAY #22



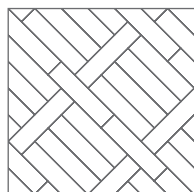
LOOM PLAY #23



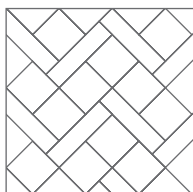
LOOM PLAY #24



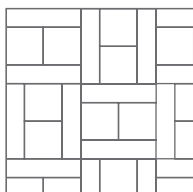
LOOM PLAY #25



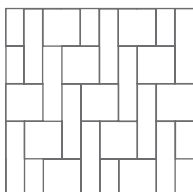
LOOM PLAY #26



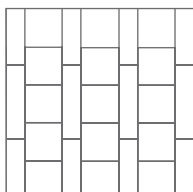
LOOM PLAY #27




LOOM PLAY #28



LOOM PLAY #29

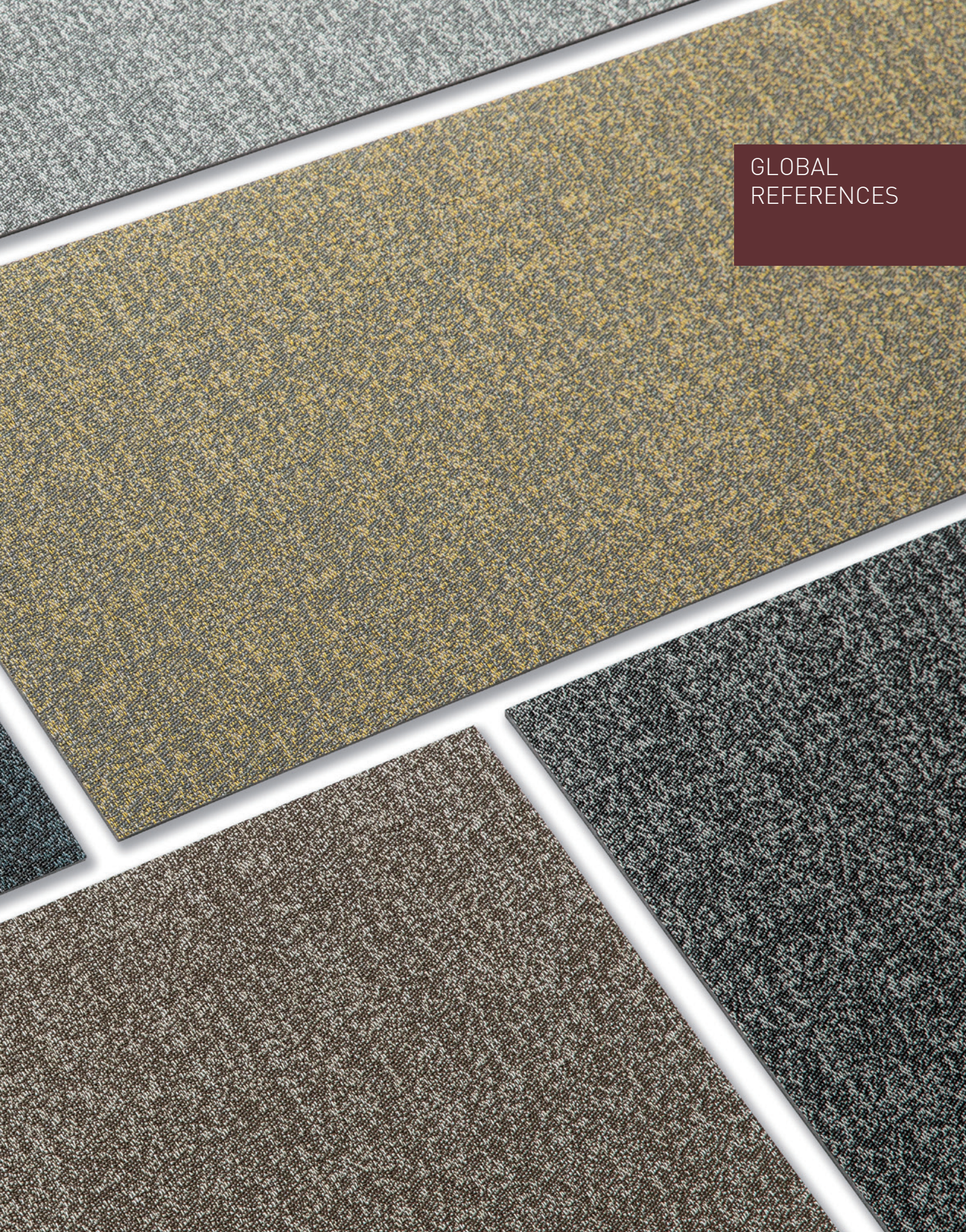


LOOM PLAY #30



LOOM⁺
CREATE
YOUR OWN DESIGN

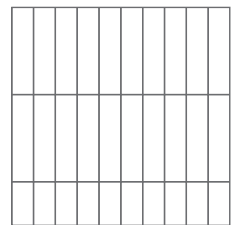
GLOBAL
REFERENCES



Restaurant



FQ-2601 FQ-2603
FQ-2604 FQ-2606

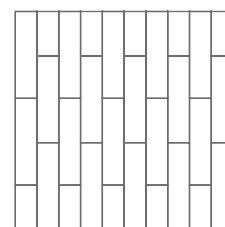


LOOM PLAY #08

Hospitality



FQ-2603 FQ-2604
FQ-2606

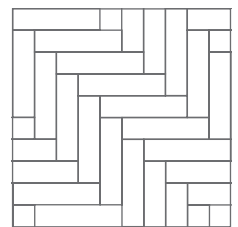


LOOM PLAY #24

Retail shop



FQ-2601 FQ-2606



LOOM PLAY #21

Healthcare



LOOM+ fray-proof lets you freely cut out the tiles in any creative forms.

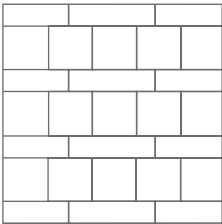


FQ-2601 FQ-2602 FQ-2603
FQ-2604 FQ-2606

Education & Libraries



FQ-2601 FQ-2602
FQ-2605 FQ-2606



LOOM PLAY #30

Corporate



FQ-2603 FQ-2604
FQ-2605

Sports Center



FQ-2601 FQ-2602
FQ-2606














TECHNICAL INFORMATION

1. Size & Packing

Size(mm)	Thickness(mm)	Pcs/Box	m'/Box	Kg/m'
500x500	3	16 pcs/box	4 m'	5.0
	5	10 pcs/box	2.5m'	8.2
250x1000	3	16 pcs/box	4 m'	5.0
	5	10 pcs/box	2.5m'	8.2

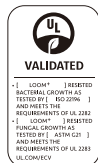
2. Test Result

Test Item		Standard	LOOM ⁺
Level of use		EN 685	33
Fraying		EN 1814	Frayproof
Thermal resistance		ISO 8302	0.02m²K/W
Castor chair resistance		EN 985	No damage
Dimensional stability		ISO 23999 EN 986	≤ 0.10% (Norm: ≤ 0.25%) Passed
Fire resistance		EN 13501-1	Bfl -s1
Indoor air quality			Low VOC (floor score certified)
Underfloor heating		EN 12524	Suitable
Light fastness		ISO 105-B02	≥ 6
Slip resistance		DIN 51130 EN 13893	R11 DS
Flexibility		ISO 24344	Passed
Impact sound insulation		ISO 10140-3	9dB
Body Voltage		EN 1815	≤ 2KV
Squareness & Straightness		ISO 24342 ASTM F2055	No deviation ≤ 0.01 in
Residual indentation		ISO 24343-1 ASTM F1914	≤ 0.1mm < 8%
Resistance to chemicals		ISO 26987 ASTM F925	No Defects No Defects

3. Caution

Condition in at least 19°C or the normal temperature of the room where the product is to be laid, for at least 48 hours before installing. Cartons must be stacked less than 5 high and tiles removed 30 minutes before use. The site conditions must be maintained during installation and for at least 48 hours after completion. NOX Corporation will not accept claims where these instructions have not been followed.

4. Certificate



Please visit www.noxglobal.com for detailed installation / maintenance guides and technical information.

Reinventing Spaces



WOVEN DESIGN FLOORING

Designed and Manufactured by NOX Corporation

Design Center & Office

KD Center, 355, Hyoryeong-ro, Seocho-gu, Seoul, 06643 Korea
Tel +82-2-520-7600
Fax +82-2-598-9674
www.noxglobal.com
E-mail info@noxglobal.com

NOX Corp. | KOREA

Shinho Factory
Shinho 2nd Factory, Yedang
Enbo Factory
Godeok Factory
Bongsan Factory
Deoksan Factory
Nox Exterior Factory

NOX US | USA

NOX US
P.O. Box 824
931 S. Springville Avenue
Fostoria, OH 44830
Office +01-419-701-5060
Fax +01-419-701-5058

NOX ASEAN | VIETNAM

NOX ASEAN
Road NO.8, Nhon Trach 6 Ip, Dong Nai, Vietnam
Office +084-251-3684244
Fax +084-251-3684255